



Hearne Road, London, W4 3Nj

Guide Price £1,150,000

**WHITMAN & CO.**

SALES · LETTINGS · COMMERCIAL

- Rarely available period property
- 25'8 Double reception room
- Potential to extend STPP
- Fabulous 68' west facing garden
- Sought after residential street
- No onward chain

Tenure - Freehold  
Local authority - Hounslow  
Council Tax - F

## THE PROPERTY

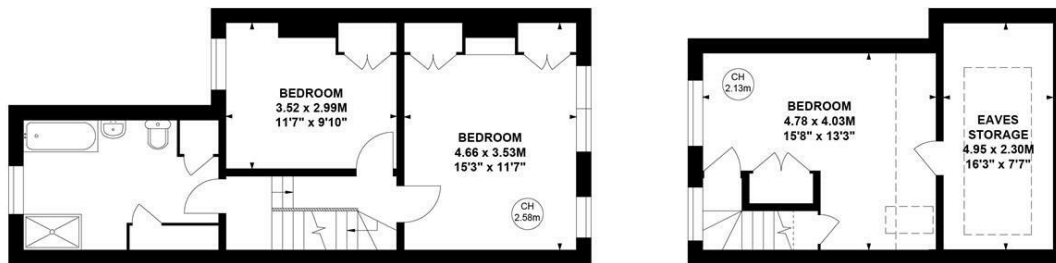
A rarely available period terraced house with a fabulous 68' west-facing garden located on this highly sought-after residential road in the Strand on the Green area of Chiswick. The accommodation comprises a 25'6 double reception room with bay window, fitted kitchen/breakfast room with doors onto the garden, three double bedrooms (all with fitted wardrobes), a large family bathroom with a separate shower, a guest cloakroom and extensive eaves storage. The house offers the potential to extend on both the ground and first floor and add a garden studio STPP. The property is moments from Strand on the Green's picturesque riverside with its pubs, cafes and restaurants and within the catchment of Strand on the Green primary school. Chiswick High Road's extensive facilities are within walking distance as is Kew Gardens. Transport links include Gunnersbury (Overground and District Line) Station, Kew Bridge (Mainline) Station, local bus routes and the A4/M4 for routes in and out of London. No onward chain.

## Hearne Road, W4

Approximate gross internal area  
**125.93 sq m / 1355 sq ft**  
(Including Eaves Storage 11 sq m / 120 sq ft)  
Garden (96 sq m / 1038 sq ft)

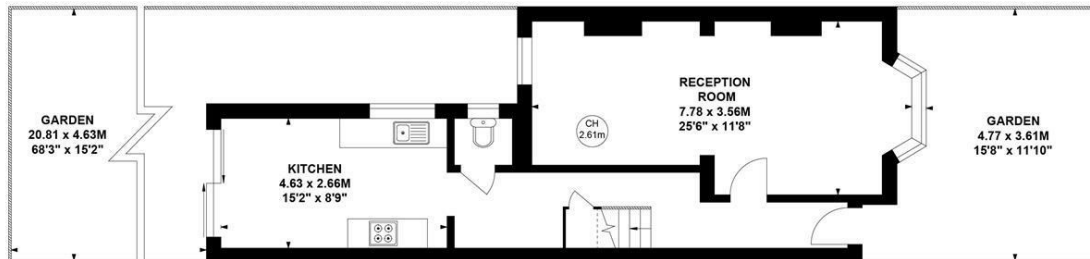


Key :  
CH - Ceiling Height



First Floor

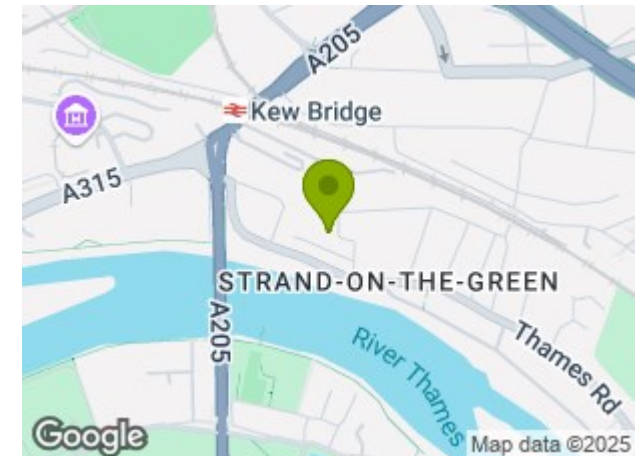
Second Floor



Ground Floor

Not to scale, for guidance only and must not be relied upon as a statement of fact.  
All measurements and areas are approximate only

## SITUATION



5-7 Turnham Green Terrace, Chiswick, London, W4 1RG

Tel 020 8747 8800

E-mail [sales@whitmanandco.com](mailto:sales@whitmanandco.com)

Website [www.whitmanandco.com](http://www.whitmanandco.com)